

Professional Fluid Management



Production Range
Drum and Container Pumps
Flow Meter Systems
Double Diaphragm Pumps
Centrifugal Pumps

Safety is our Concern

Customer- and Service Orientation in focus

Professional Fluid Management

Responsibility, safety, reliability and progress are values that enjoy a long tradition at Lutz.

Founded in 1954 Lutz-Pumpen has distinguished itself by producing quality products, and has built up a sound reputation for safety in the pumping field led by its expertise in the drum and container market. Successively, other products have been added in order to cater to the needs of our customers.

We are indebted to all our loyal customers who have often been the source of our many innovations, as we sought to provide them with the solutions they required.

This is reflected in the proven quality of our products as well as in the quality of our environmental consciousness.

This philosophy, which we practice every day, has made us strong - and builds, also in the future, a sound basis for the development of innovative ideas.

Wherever liquids have to be pumped or transferred and safety is of high concern Lutz offers you the ultimate professional solution to all your transfer needs, but also here applies:

"Often copied, but never reached"!



Lutz representation world wide

Argentina
Aserbaidshan
Australia
Austria
Bangladesch
Belarus
Belgium
Bolivia
Bosnia and Herzegovina
Brazil
Bulgaria
Canada
Chile
China
Hong Kong
Croatia
Cyprus
Czechia
Denmark
Egypt
Estonia
Finland
France
Great Britain
Greece
Hungary

Iceland
India
Indonesia
Iraq
Ireland
Italy
Japan
Kasachstan
Korea
Latvia
Lithuania
Luxembourg
Macedonia
Malaysia
Mexico
Montenegro
Netherlands
New Zealand
Norway
Paraguay
Peru
Philippines
Poland
Portugal



Rumania
Russia
Saudi Arabia
Serbia
Singapore
Slovakia
Slovenia
South Africa
Spain
Sri Lanka
Sweden
Switzerland
Syria
Taiwan
Thailand
Turkey
Turkmenistan
U.A.E.
Ukraine
Uruguay
USA
Usbekistan
Venezuela
Vietnam

www.lutz-pumpen.de

Our distributors are ready to assist you, to find out more please see our web site.

Lutz – the Development

Decades of innovative and convincing pump technology

1954

The company is founded by Karl Lutz.

1963

Explosion-proof motor for drum pumps, approved by the PTB*, Braunschweig.

1972

The product innovation – a sealless pumping unit.

1987

The first pumping unit worldwide for complete drum drainage.

1988

The new MA/ME generation of motors: Safety standards that are state of the art even today.



1990

EMIGA emission-proof drum adapter for enhanced safety and health protection at the work place.

1990

The first compressed air motor worldwide in a flameproof enclosure with an explosion-protection classification of Ex d IIC T6.

1993

Modular flow meter system for efficiency and accurate measurement.

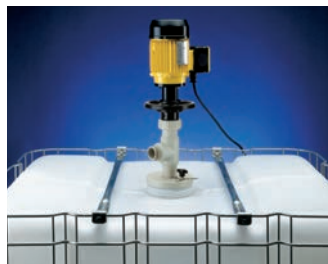


1994

Compressed-air-operated oil-free double diaphragm pumps extend the range of products.

2000

New development of a container pump for a safe transfer of chemicals.



2000

New development of a flameproof relay module for flow meters.

2001

Complete pump sets provide enhanced service and a high degree of customer-friendliness.

2001

Centrifugal pumps – easy circulation even in heavy-duty applications.

2001

Certification of all the motors, pumping units and flow meters for compliance with Atex.



2004

HDO Flow meter series for thin bodied to highly viscous fluids.

2006

Complete pump systems for the transfer of alternative fuels and additives from drums and containers.

2007

Lutz B2 Vario pump for the laboratory and research sector.



2010

Battery powered laboratory pump Lutz B1 for convenient and safe transfer of small liquid amounts.

2011

Lutz B70V Sanitary: Designed according to the latest directives for the high requirements of the food, beverage, pharmaceutical, and cosmetics industry.

2012

The new Lutz Flow Meter Series: In Touch with the Future.

(*The Physikalisch-Technische Bundesanstalt (PTB), Braunschweig and Berlin, is the national institute of natural and engineering sciences and the highest technical authority for metrology and physical safety engineering of the Federal Republic of Germany)

Lutz Drum and Container Pumps



Reliable and solid

High-quality materials and a proven design guarantee a long service life and a minimum of downtime.

Confidence in tried and tested quality

Personnel, product and customer training, certification in compliance with DIN EN ISO 9001 and accurate inspection and testing of every single unit guarantee that you are always on the safe side.

Environment consciousness is our primary concern

Environmental protection is our primary concern. For this reason, Lutz does not "do things by halves". Complete drum drainage, pumping units without a need for grease and gas displacement devices are a matter of course. EMIGA, the special emission-proof drum adapter by Lutz offers maximum health and environmental protection when handling hazardous material.

Lutz – and our customers will always be on the safe side

Operational safety is the most essential thing. Lutz pumps have been approved for compliance with established standards and directives. They comply with all the requirements laid down by IEC, Atex, UL, PTB, VDE (German Association for Electrical, Electronic and Information Technologies) and CE.

Lutz provides comprehensive solutions

Irrespective of whether you want a complete set or a customised unit – Lutz provides solutions that are well-suited. A matching range of accessories guarantees efficient and safe operation in all areas of application.

Always the Right Choice

For mobile or stationary applications



Features

- ✓ Tried and tested a thousand times in practice
- ✓ Suitable material combinations
- ✓ Service-friendly installation
- ✓ Well thought-out design



The right answer for each and every medium

Due to their carefully adapted material combinations, the modular drum pumps by Lutz are well suited for almost all applications, in which thin-bodied and low-viscous media need to be pumped. PP and PVDF are a good match for acids and caustic solutions, aluminium is particularly suited for oil and cooling lubricants. Pumping units made of stainless steel or HC steel are suited for delivering neutral, aggressive and non-combustible fluids.



Play it safe:

The explosion-proof models of Lutz drum pumps provide optimum protection when handling easily combustible, highly inflammable material and when working in potentially explosive environments. The drum pumps are made of stainless steel (1.4571) and are thus certified for zone 0. They comply with all the international standards and provisions as well as with the directives according to Atex Directive 94/9/EC.



Lutz Drum and Container Pumps

For thin-bodied to low-viscous fluids



Fast assembly
Only few simple operations required
Immediately ready for use

Individual Pre-Assembled Pump Sets

Lutz pump sets save time and money. The annoying search for the ideal pump with suitable accessories has come to an end. Lutz is offering you a choice of different pump sets. Optionally, the pumps can be combined with a flow meter. Thus, ordering is simple and you save time.

Perfectly equipped: Accessories

A comprehensive accessories program guarantees solutions ideally suited to any area and any application.



Working efficiently in the laboratory

Small, powerful, versatile: the Lutz B2 Vario. An assistant you will not want to be without when having to re-fill or fill small amounts or add metered amounts of fluids of low viscosity. Optionally available is the battery powered laboratory pump B1 Akku. Both pumps are suitable for drums, narrow-necked carboys, canisters and safety cans. With these pumps Lutz offers the market a duo which caters for the needs of a comfortable and safe filling.



Lutz B2 Vario

Features

- ✓ **Variable speed motor** with safety cut-out to enable the transfer of liquids in small amounts
- ✓ Easy and safe to operate by integrated ergonomically designed handles and nozzle
- ✓ Ultra quiet, long service life
- ✓ Different lengths available 500, 700 and 1000 mm for the use in small vessels up to 200 litre drums
- ✓ Wide range of applications possible due to sealless construction
- ✓ Service-friendly and simple to dismantle
- ✓ Available in polypropylene and stainless steel (1.4571)

Delivery rate:	max. 75 l/min
Delivery head:	max. 7 m wc
Density:	max. 1.3 kg/dm ³
Viscosity:	max. 300 mPas

Not explosion proof versions

MI-4 / MA II / MD / B4-GT
PP / PVDF / Alu / Niro / HC

Features

- ✓ High performance in pump capacity and pumping head
- ✓ Repair and service-friendly construction
- ✓ Small number of components – low costs
- ✓ Powered by an electric motor or compressed air motor
- ✓ Sealless or fitted with an axial face seal

Delivery rate: max. 210 l/min
 Delivery head: max. 25 m wc
 Density: max. 2,2 kg/dm³
 Viscosity: max. 850 mPas



Have a safe grip on acids and caustic solutions

Professional solutions for workmanlike handling of aggressive and corrosive liquids in drums, containers and other vessels – ideal for clean and safe handling of acids and caustic solutions, and of course equally well suited for handling neutral media.

Explosion proof version

ME II / MD / B4-GT
Niro / HC

Features

- ✓ Explosion-proof in compliance with Atex Directive 94/9/EC
- ✓ Suitable for easily inflammable liquids
- ✓ Handy and convenient
- ✓ Designed for robust applications
- ✓ Powered by an electric motor or compressed air motor
- ✓ Sealless or with mechanical seal

Delivery rate: max. 243 l/min
 Delivery head: max. 26 m wc
 Density: max. 2,2 kg/dm³
 Viscosity: max. 750 mPas



Explosion proof pumps

Excellent assistants in all environments with explosive atmospheres. Using these pumps, easily inflammable, combustible liquids can be pumped out of drums, containers and other vessels without risk. Developed and designed, tested and certified in compliance with ATEX Directive 94/9/EC.



Lutz Drum and Container Pumps

Specialised applications



To the last drop: complete drum drainage

The times of unnecessary product losses are over – complete drum drainage pumps help save money and are environmentally acceptable. Suitable for aggressive, non-combustible and easily inflammable media with a residue of less than 0.1 l.

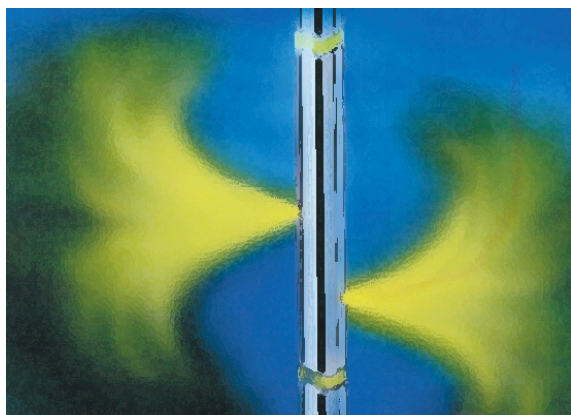


RE

Features

- ✓ Environmentally acceptable and cost-efficient
- ✓ Pumping and complete drum drainage in one go
- ✓ Designed for industrial applications
- ✓ No product losses due to a patented return stop
- ✓ Reduced costs for disposing of residuals
- ✓ Available in polypropylene and stainless steel

Delivery rate: max. 78 l/min
Delivery head: max. 22 m wc
Density: max. 2.2 kg/dm³
Viscosity: max. 1200 mPas



Two functions in one go: mixing and pumping

Emulsions, dispersions and suspensions often tend to settle-out. In this case, mixing pump units are the ideal solution. Before these fluids are delivered, the mixing pump units ensure that the media are properly mixed and homogenised.



MP

Features

- ✓ For mixing and pumping
- ✓ Designed especially for use with drums
- ✓ For thin-bodied to low-viscous fluids
- ✓ High density is not a handicap
- ✓ Available in polypropylene and stainless steel

Delivery rate: max. 216 l/min
Delivery head: max. 25 m wc
Density: max. 2.0 kg/dm³
Viscosity: max. 850 mPas

B50

Features

- ✓ Smooth operation
- ✓ High pump capacity
- ✓ Short emptying times
- ✓ Low degree of wear
- ✓ Simple handling
- ✓ Small number of components
- ✓ Low weight, suitable for mobile applications
- ✓ Convenient Lutz hand wheel for disconnecting the motor and for use as a handle
- ✓ Available in polypropylene

Delivery rate: max. 200 l/min
 Delivery head: max. 22 m wc
 Density: max. 1.8 kg/dm³
 Viscosity: max. 100 mPas



Fast and safe emptying of containers

Tried and tested principle combined with innovative technology: vertical, wet-well immersion container pumps facilitate a clean emptying without the use of bottom drains – even with a high pump capacity and a low risk of leaks.

HD-E / B70

Features

- ✓ Gentle product delivery
- ✓ For thick and thin-bodied media
- ✓ Constant volume flow
- ✓ Easy to clean
- ✓ Smooth operation
- ✓ Suitable for continuous operation



When things get tough: High Viscosity Pumps

The gentle and at the same time effective solution for viscous and/or shear-sensitive media: Eccentric screw pumps of the B70V and HD-E series

New

Lutz B70V Sanitary pump, according to the 3-A Sanitary Standard. For optimal pumping of thin-bodied to highly viscous media.



	HD-E	B70V-SR	B70V-D
Delivery rate:	max. 20 l/min	max. 50 l/min	max. 120 l/min
Delivery head:	max. 4 bar	max. 8 bar	max. 10 bar
Viscosity:	max. 4,000 mPas	max. 30,000 mPas	max. 120,000 mPas
Housing material:	stainless steel	stainless steel	stainless steel, St37

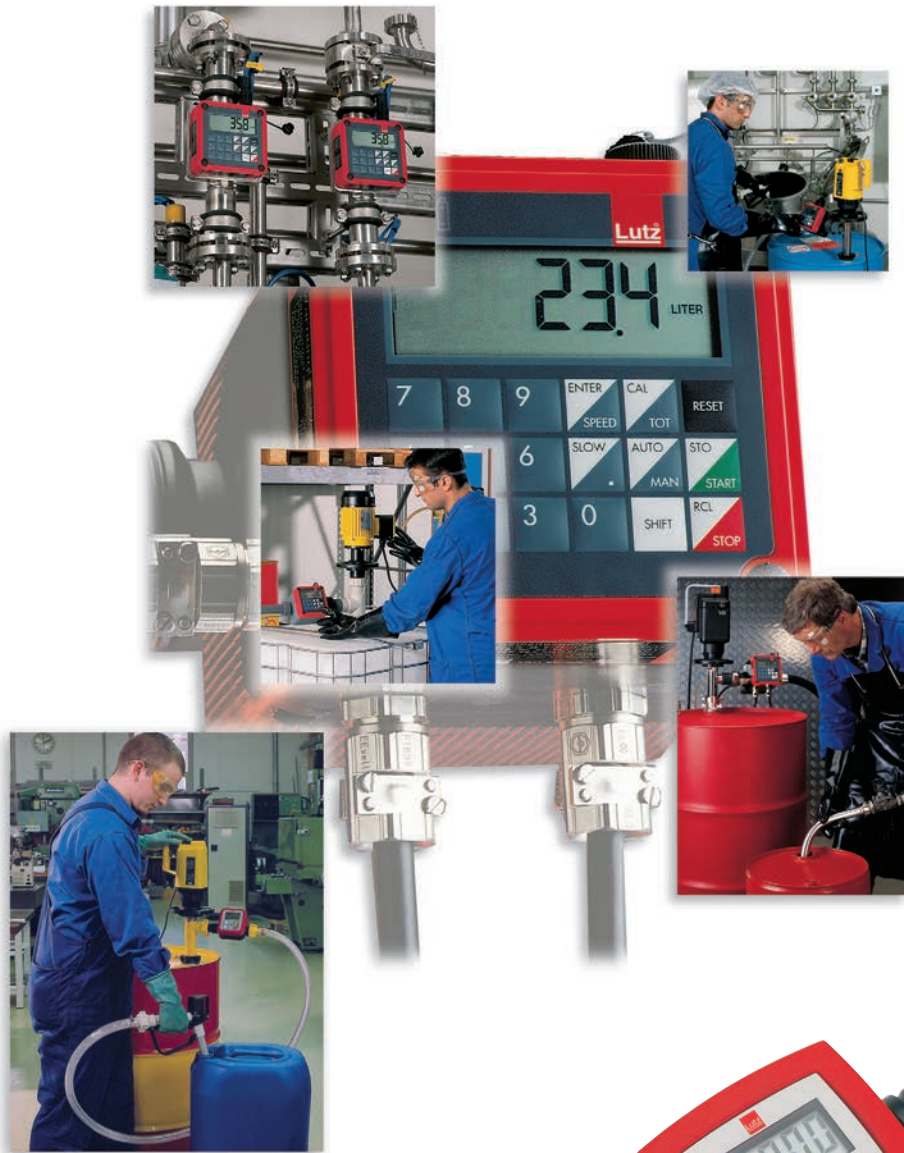
Lutz Flow Meters

Take control

Take control: Lutz flow meters

Nowadays, it's precision that counts in laboratory and production environments alike. This holds especially true for handling fluids. Precise tracking of the quantities delivered not only assures the quality of the operations but it also makes sure that resources are handled economically.

Flow metering must be efficient, economical and, above all, suited for practical applications – whether mobile or stationary. These applications call for a multi-functional system that can easily be adapted to all kinds of requirements. Irrespective of whether the application relates to thin-bodied or viscous media, small quantities or an entire Road Tanker: Lutz flow meters track precisely what's „flowing out“. Even when easily inflammable fluids are involved: This method of flow metering keeps you on the safe side.



Compact & Cost-Efficient

- ✓ For thin-bodied media
- ✓ Non-Ex
- ✓ Can be used in combination with all drum and container pumps
- ✓ Can be calibrated
- ✓ In PP and PVDF



PP for neutral and aggressive liquids

such as glycol, ferric (III) chloride, hydrochloric acid, phosphoric acid

TR series



PVDF for highly aggressive fluids

such as sodium hypochlorite, nitric acid, sulphuric acid

The New Generation of Flow Meters

In Touch with the Future

There are a lot of measuring devices for fluids. But the advantages of the new Lutz flow meters stand out from them all. Their precision, flexibility and user-friendliness will win you over.

Discover the pluses of innovative Lutz technology:

- ✓ Touch screen display
- ✓ Multilingual menus
- ✓ Simple plain-text operation
- ✓ Integrated help function
- ✓ High precision through overrun correction and characteristic adjustment
- ✓ Safety and monitoring functions
- ✓ Simple system connection
- ✓ Plug & play modular design



**You have got the choice:
Plastic or stainless steel design**

Type ST

for neutral liquids

such as water, heating oil, diesel and hydraulic fluid

Type LM

for highly flammable solvents

such as ethanol, petrol, isopropanol, kerosene

Type SL

**for aggressive acids
and caustic solutions**

such as hydrochloric acid, sulphuric acid and caustic

Type UN

**for highly flammable
and aggressive media**

such as formic acid, acetic acid, tetrahydrofuran

Type VA I

**for highly flammable
and aggressive media**

such as ether, styrene, xylene, nitric acid, tetrahydrofuran



Lutz Double Diaphragm Pumps

They pump and pump and pump...

Lutz takes you through thick and thin:

Even if it comes „thick and fast“: In any situation at all, the oil-free valve technology of Lutz double diaphragm pumps guarantees unobstructed, infinitely variable operation. These pumps are capable of delivering even critical material to be conveyed in a gentle and safe manner. They are equally well suited for aggressive, abrasive or easily inflammable fluids and for media with a high viscosity.



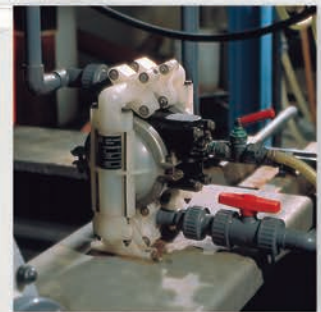
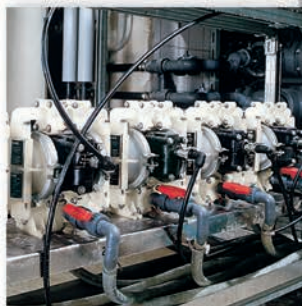
Typical pumping application

Great variety



Application fields:

- Paint- and Lacquer
- Electroplating/Surface treatment
- Chemical
- Ceramics
- Paper and Pulp
- Metal and Mining
- Waste recycling



DMP 1/4"

Delivery rate: max. 16 l/min
 Delivery head: max. 6.8 bar
 Materials: PP, PVDF, Nylon

DMP 3/8"

Delivery rate: max. 34 l/min
 Delivery head: max. 8.0 bar
 Materials: PP, PVDF, Nylon

DMP 1/2"

Delivery rate: max. 65 l/min
 Delivery head: max. 8.0 bar
 Materials: PP, PVDF, Nylon, Alu, stainless steel

DMP 1"

Delivery rate: max. 156 l/min
 Delivery head: max. 8.0 bar
 Materials: PP, PVDF, Alu, stainless steel

DMP 1 1/2"

Delivery rate: max. 492 l/min
 Delivery head: max. 8.2 bar
 Materials: PP, PVDF, Alu, stainless steel

DMP 2"

Delivery rate: max. 681 l/min
 Delivery head: max. 8.2 bar
 Materials: PP, PVDF, Alu, stainless steel

DMP 3"

Delivery rate: max. 965 l/min
 Delivery head: max. 8.5 bar
 Materials: Alu

Lutz Vertical Centrifugal Pump

For stationary or mobile applications



Here, everything revolves around safety and environmental protection: Lutz centrifugal pumps ensure the safe delivery of aggressive, corrosive and other hazardous acids or alkalis.

Well thought-out modular system

The individual component sizes, the technical constructions and materials of the vertical, wet-well immersion pump series can be combined as desired.

Areas of application

Centrifugal pumps are especially suited for use in electroplating and sewage engineering, in the chemical industry, in the field of water treatment and in gas purifying systems.



B50

For neutral and aggressive fluids.

Delivery rate: up to 12 m³
 Delivery head: up to 22 m
 Materials: polypropylene
 Temperature of pumped medium: up to 50 °C
 Immersion depths: up to 2,000 mm



B6

For neutral and aggressive fluids with a small amount of solid matter.

Delivery rate: up to 60 m³/h
 Delivery head: up to 15 m
 Materials: polypropylene or stainless steel
 Temperature of pumped medium: up to 100°C
 Immersion depths: up to 3,000 mm



B80

For neutral and aggressive fluids with a large amount of solid matter.

Delivery rate: up to 270 m³/h
 Delivery head: up to 85 m
 Materials: polypropylene, polyvinylidene fluoride or polyvinyl chloride
 Temperature of pumped medium: up to 90°C
 Immersion depths: up to 4,000 mm (with tail-pipe extension up to 2,000 mm)



Pumps in horizontal construction capable for dry running are available.

Lutz Pumpen GmbH

P.O. Box 14 62 · D-97864 Wertheim
Tel.: (+49 93 42) 8 79-0 · Fax: (+49 93 42) 87 94 04
e-mail: info@lutz-pumpen.de

www.lutz-pumpen.de